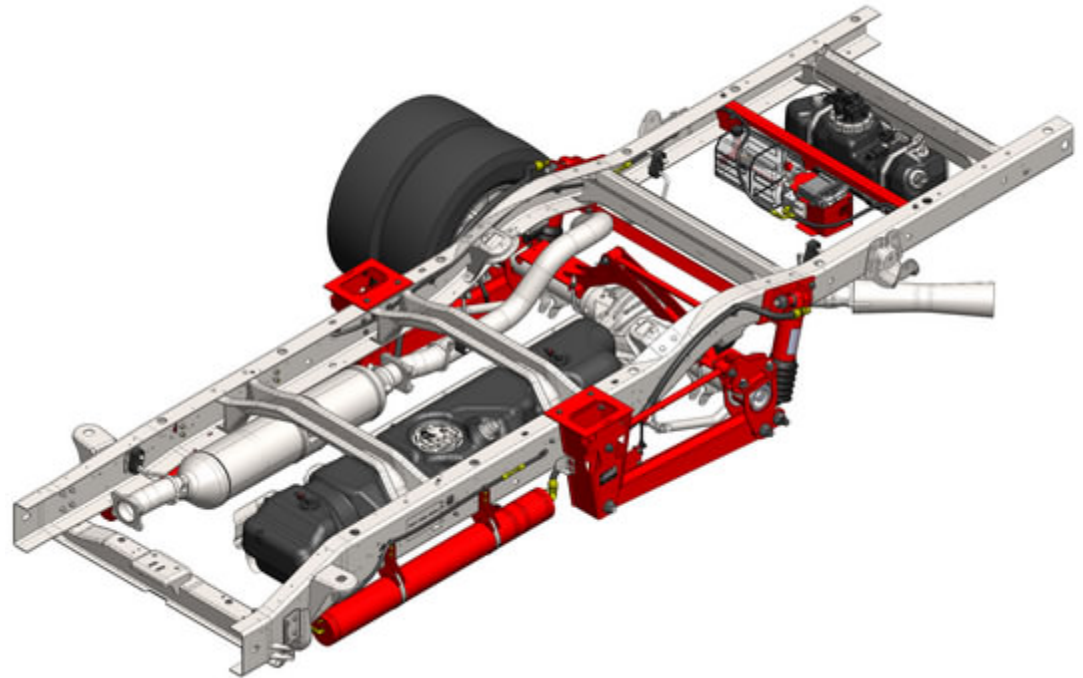


CLASS[®]

DS96GM-AM

Drive Axle Rear Suspensions
for Chevrolet/GMC G3500/4500
Cutaway Chassis with Mid-Ship
Mounted Fuel Tanks

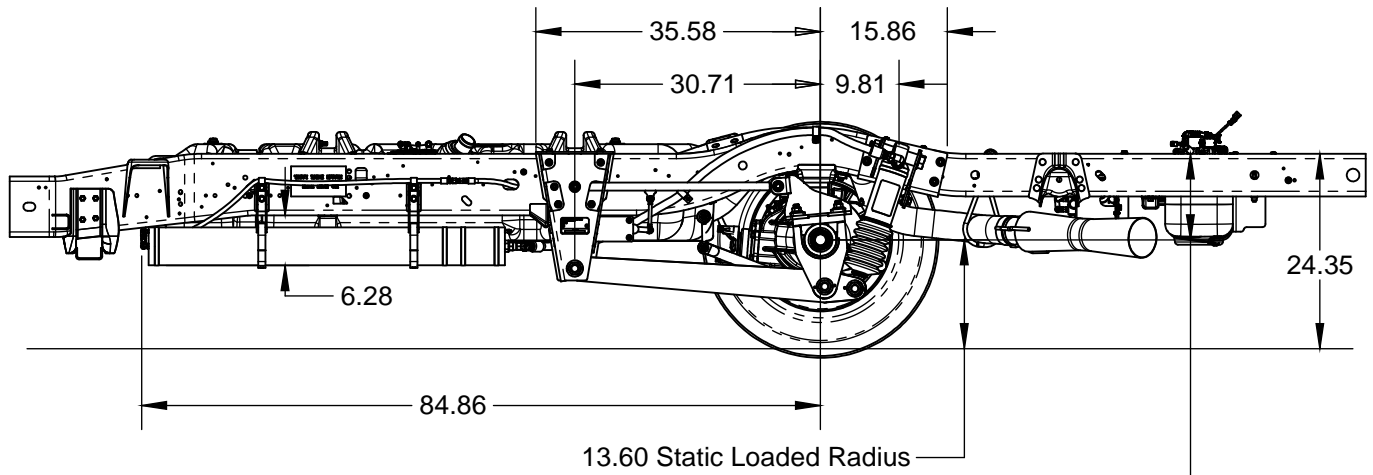
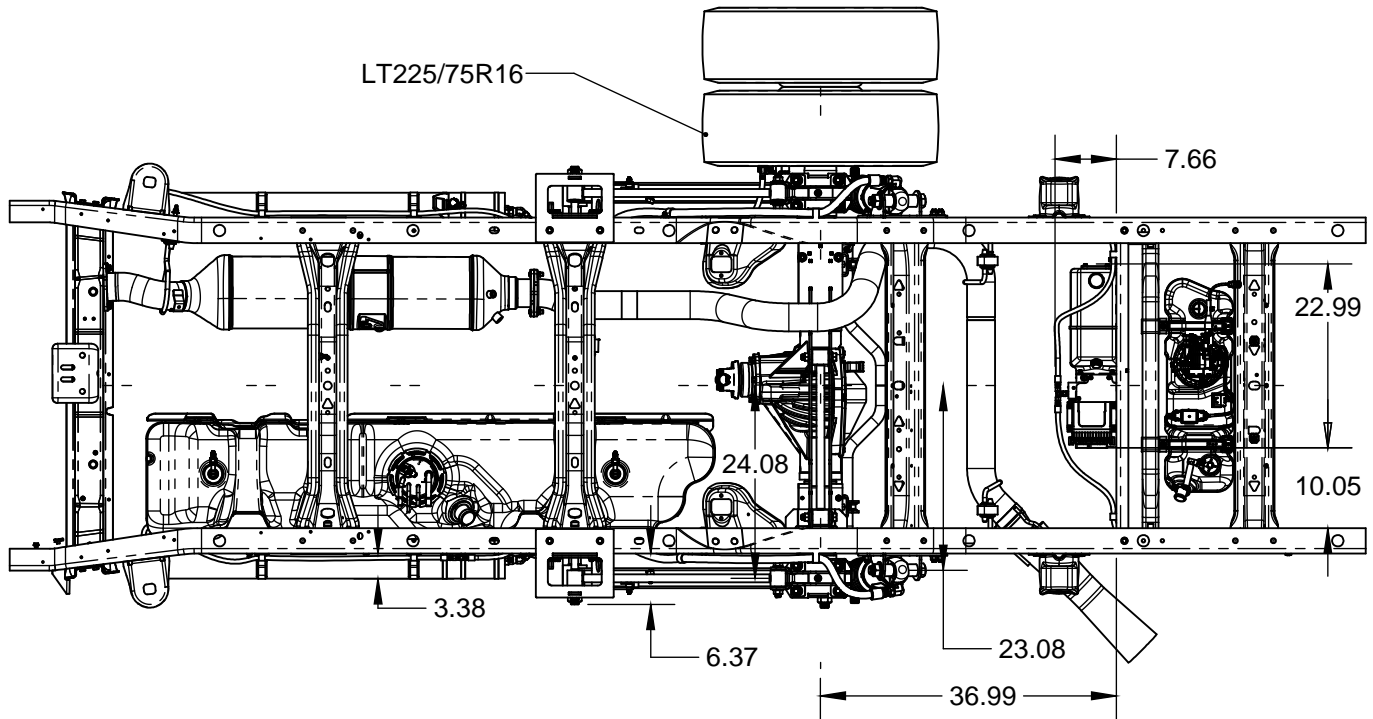


- Non-torque reactive design optimized with CLASS[®]
- Maintains proper driveline geometry through full range of torque inputs reducing driveline noise, vibration, and fatigue
- Variable stiffness and damping adjusted automatically and instantaneously based on road conditions without driver intervention
- Does not require modification to exhaust
- Compact package space claim
- 9600 lbs GAWR for Chevrolet/GMC G4500
8600 lbs GAWR for Chevrolet/GMC G3500



Compressible Liquid Adaptive Suspension System

DS96GM-AR Drive Axle Rear Suspensions for Chevrolet/GMC G3500/4500 Cutaway Chassis with Mid-Ship Mounted Fuel Tanks



10.75 Design Ride Height
3.00 Jounce Travel
3.00 Rebound Travel



LiquidSpring™ LLC
3416 Rascal Drive
Lafayette, IN 47909

Phone: 765-474-7816
Fax: 765-474-7826

Web: www.liquidspring.com