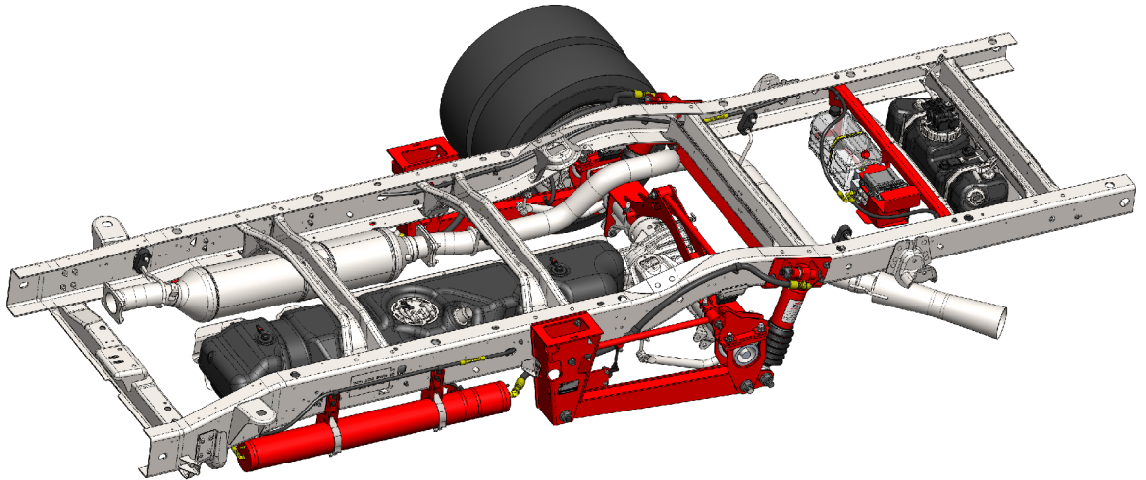


[®]
CLASS

Chevrolet/GMC G3500/4500

Drive Axle Rear Suspensions
for Cutaway Chassis with
Midship Mounted Fuel Tanks



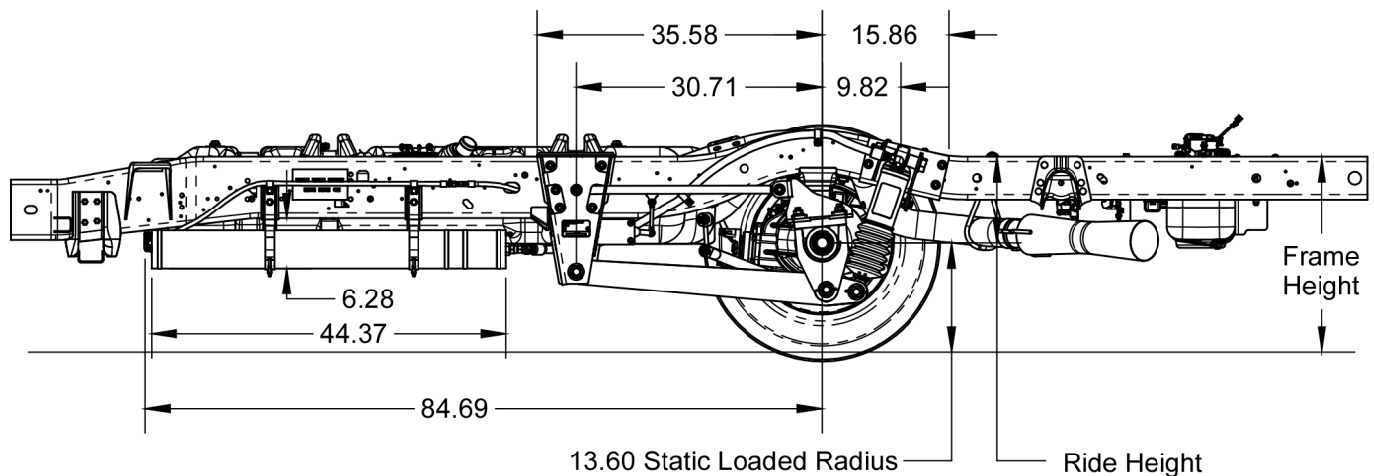
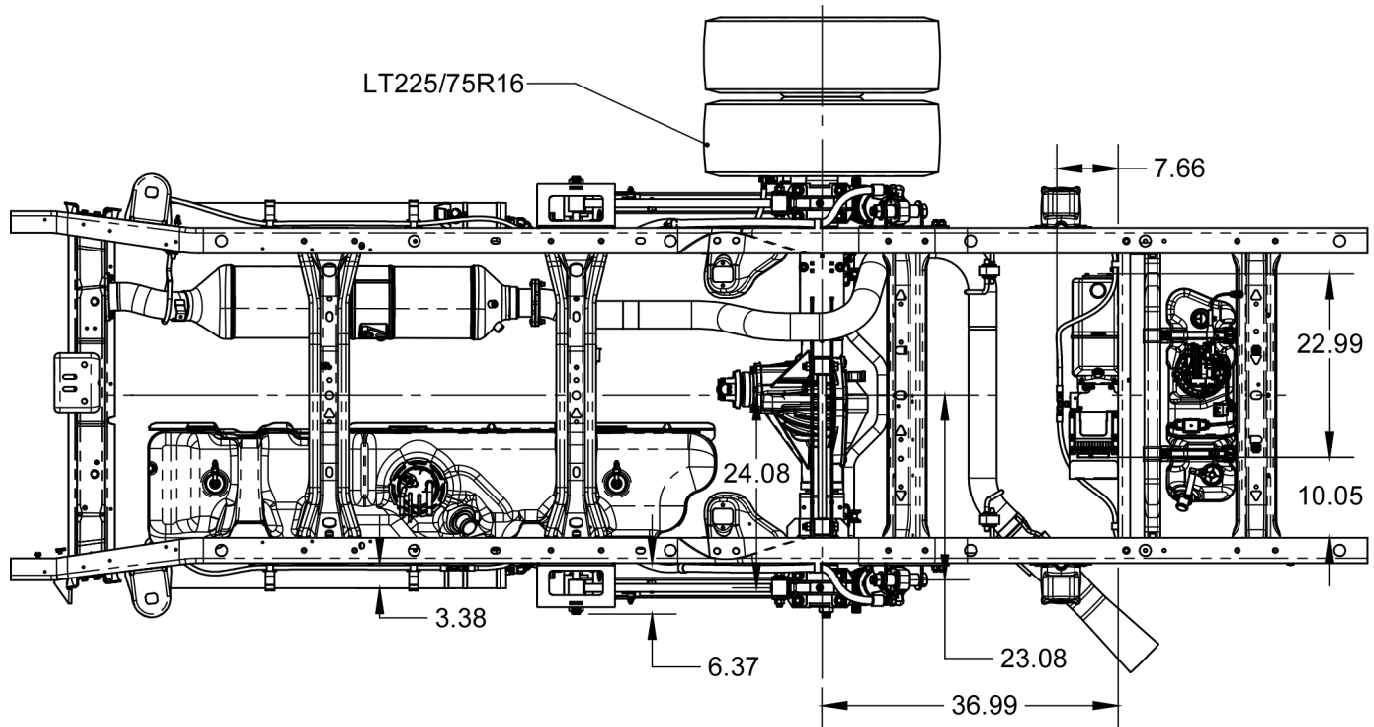
- Non-torque reactive design optimized with CLASS[®]
- Maintains proper driveline geometry through full range of torque inputs reducing driveline noise, vibration, and fatigue
- Variable stiffness and damping adjusted automatically and instantaneously based on road conditions without driver intervention
- Does not require modification to exhaust
- Compact package space claim
- 9600 lbs GAWR (G4500)
8600 lbs GAWR (G3500)



Compressible Liquid Adaptive Suspension System

Model: DS96GM-AM

Drive Axle Rear Suspensions for Chevrolet/GMC G3500/4500 Cutaway Chassis with Rear Mounted Fuel Tanks



Ride Height: 10.76" (3.00" Jounce Travel / 2.75" Rebound Travel)
 Frame Height: 26.11" (Top of rear frame to ground at Ride Height)
 22.19" (Top of rear frame to ground kneeled)



LiquidSpring™ LLC

3416 Rascal Drive
 Lafayette, IN 47909

Phone: 765-474-7816

Fax: 765-474-7826

Web: www.liquidspring.com