

Suspension Bulletin

- Suspension updates will be implemented as a rolling changeover.
- ECU changed to (4) headers.
 - o "A" header will be plugged until front suspension is installed.
 - o New connection is required for rate valve ground between "B" and "D" harnesses.
- Suspension wiring is now broken up into (4) sections:
 - o A - front route (Grey), B - rear route (Black), C - dash & battery (Green), & D - power module (Tan).
- Refer to installation manual for new wiring schematics.
- Dash harness now plugs into external harness that passes through into cab; butt splicing is no longer required.
- Door trigger flying lead connector changed to Deutsch 3-pin (DT04-3P).

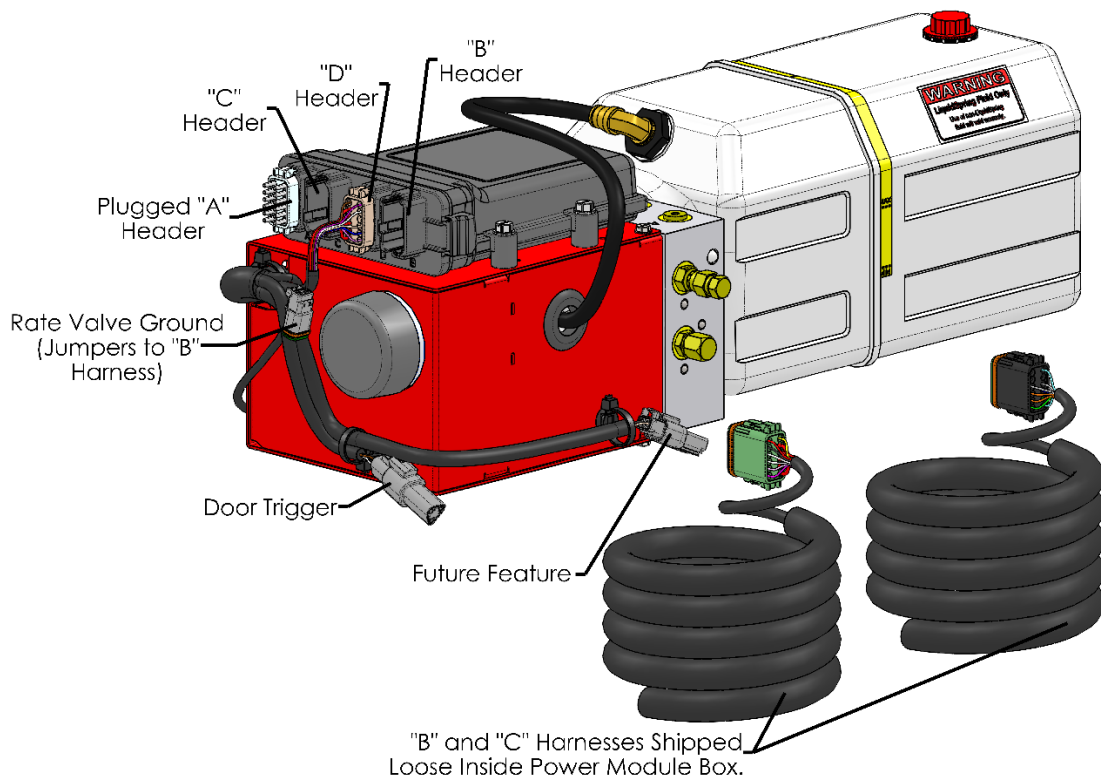


Figure 1: New Power Module Assembly

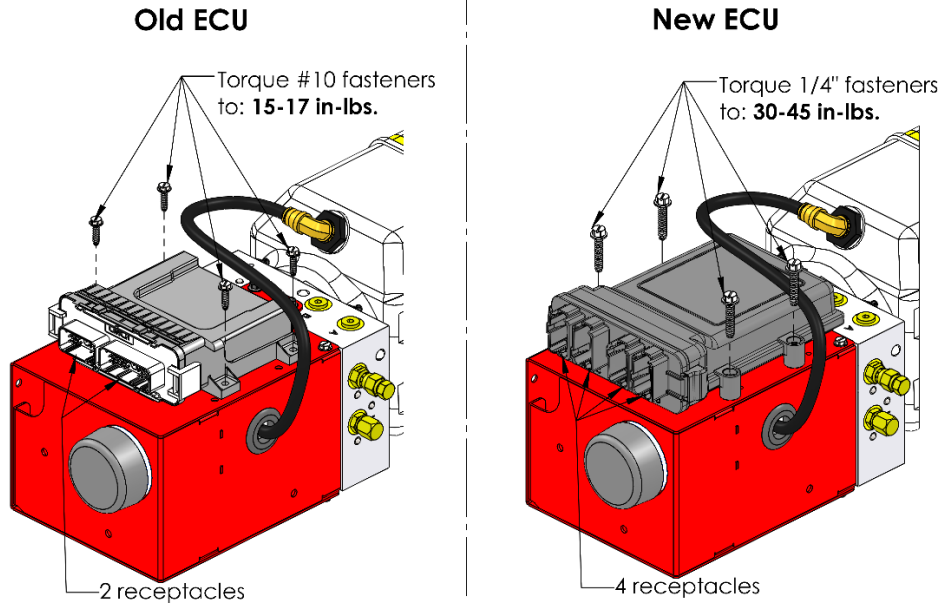


Figure 2: ECU Comparison

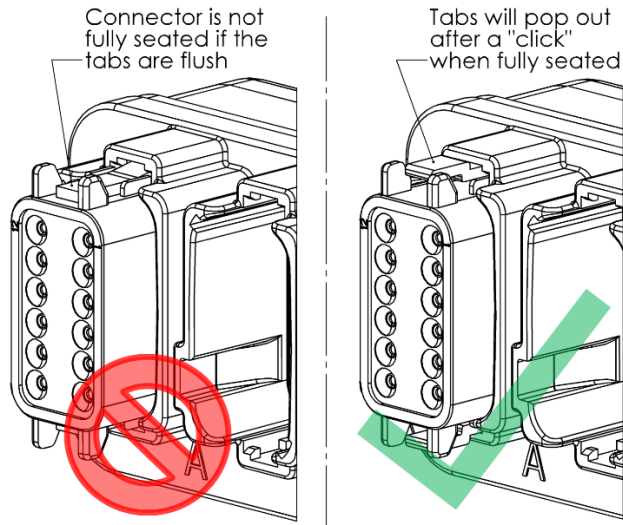


Figure 3: Properly Seated Connector



LiquidSpring® LLC

4899 E 400 S
Lafayette, IN 47905

Phone : 765-474-7816

Fax : 765-474-7826

Web : www.liquidspring.com

Information contained in this publication is subject to change without notice or liability. LiquidSpring LLC reserves the right to revise the information presented or discontinue the production of parts described at any time.