



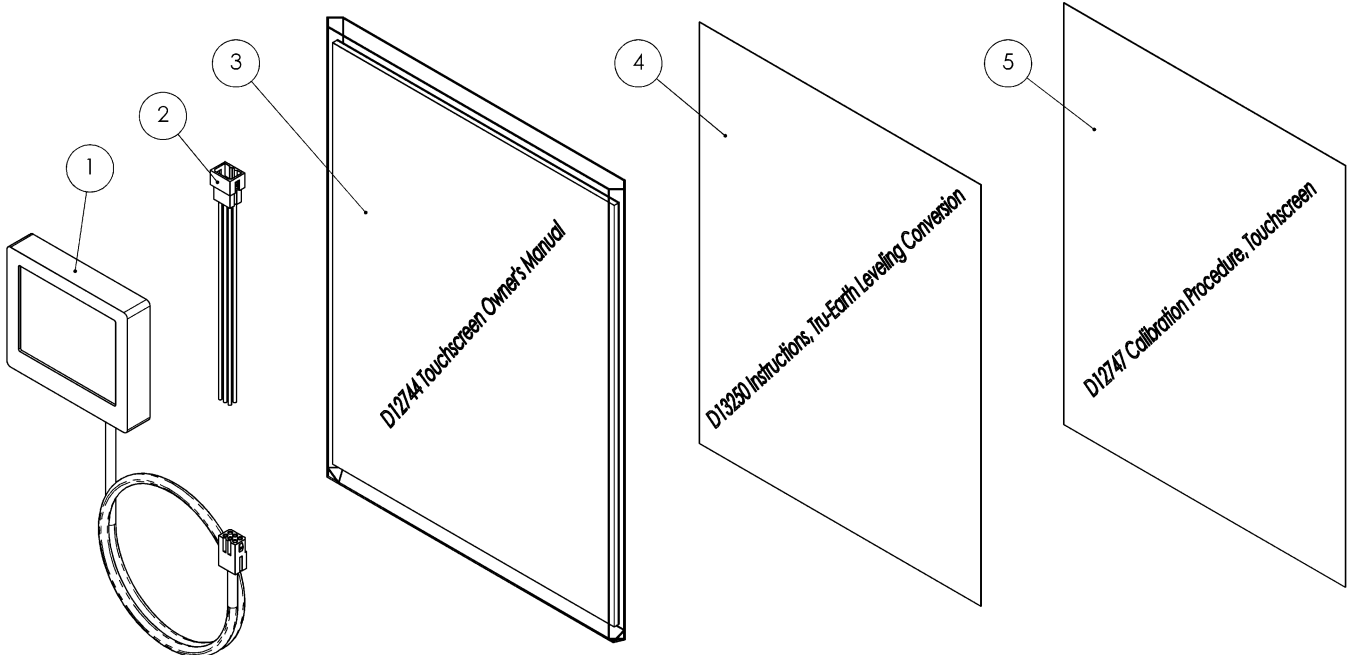
Tru-Earth Leveling™ Conversion

Units equipped with front and rear LiquidSpring suspensions with Normally Open Rate Valves (NORV) and 12444 ECU may be upgraded to use LiquidSpring's Tru- Earth Leveling™ (TEL), if not enabled. The Driver Interface must be switched from Touch Pad to Touchscreen and ECU software must be updated. NORV TEL Conversion Kits contain the parts needed to upgrade to LiquidSpring Tru- Earth Leveling™.

Use 13249-001S NORV TEL Conversion Kit with Bottom Exit Driver Interface.

Use 13249-002S NORV TEL Conversion Kit with Rear Exit Driver Interface.

Part Identification



ITEM	QTY	PART	DESCRIPTION	ITEM	QTY	PART NUMBER	DESCRIPTION
1	1	10680-004	Driver Interface, Bottom Exit	3	1	12743	Touchscreen Document Kit
		10680-006	Driver Interface, Rear Exit	4	1	D13250	TEL Conversion Instructions
2	1	11751-015	Harness, J12 Dash, Service	5	1	D12747	Calibration Procedure Doc.

1. Locate the current Driver Interface (DI) installed with the vehicle.

NOTE: NORV TEL Conversion Kit must be ordered to match the existing Driver Interface lead exit.

2. Confirm the lead on the new Driver Interface supplied with the NORV TEL Conversion Kit exits from the frame in the same way as the old Driver Interface being replaced. See **Figure 1**.

NOTE: If the DI lead exit does not match, contact LiquidSpring Customer Service at (765) 474-7816.

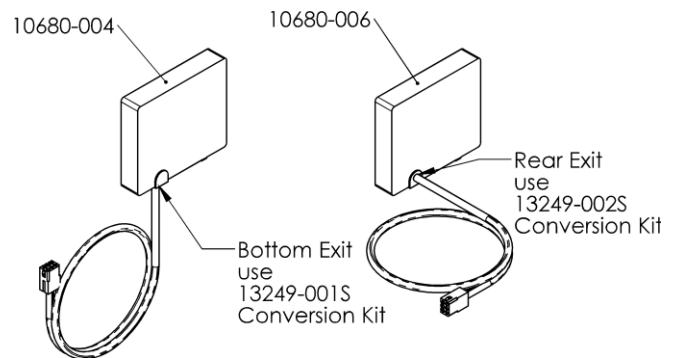


Figure 1: Driver Interface comparison

Tru-Earth Leveling™ Conversion

Driver Interface replacement

1. Locate where the current Driver Interface connects to the dash harness (located somewhere in the driver footwell/lower dash panel).
2. Disconnect the driver interface from the dash harness.
3. Compare the connector on dash harness (labeled J12) to **Figure 2**.

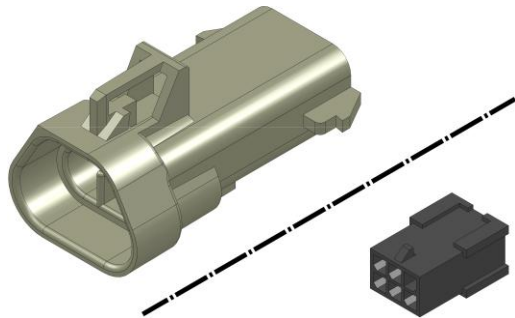


Figure 2. J12 Old Style Dash Harness Connectors

4.
 - a. **If the J12 connector on dash harness matches either of the connectors shown in Figure 2;** Individually cut the (5) wires going into that J12 connector, one wire at a time to prevent short circuiting.

WARNING: Short circuiting the dash connector may damage the system and/or vehicle electronics.

- b. **If the J12 connector on harness does not match either of the connectors shown in Figure 2;** Locate and connect the supplied new Driver Interface to the dash harness and skip to Step 9 below.
5. Strip the wires in preparation for butt-splicing the supplied 11751-015 harness to the dash harness.
 6. Match the wire colors and crimp the butt-splices to the (5) dash harness wires.

NOTE: Ensure proper crimps by tugging on the wires after crimping.

7. Use a heat gun to shrink the butt-splices around the wires.

8. Locate and connect the supplied new driver interface to the newly spliced connector.
9. Reinstall the 5 Amp fuse, if removed.
10. Reinstall the 80 Amp fuse.

Updating Software

1. Refer to “Updating Software” section in document *D12747 Calibration Procedures* for instructions on updating software and calibrating the system.